

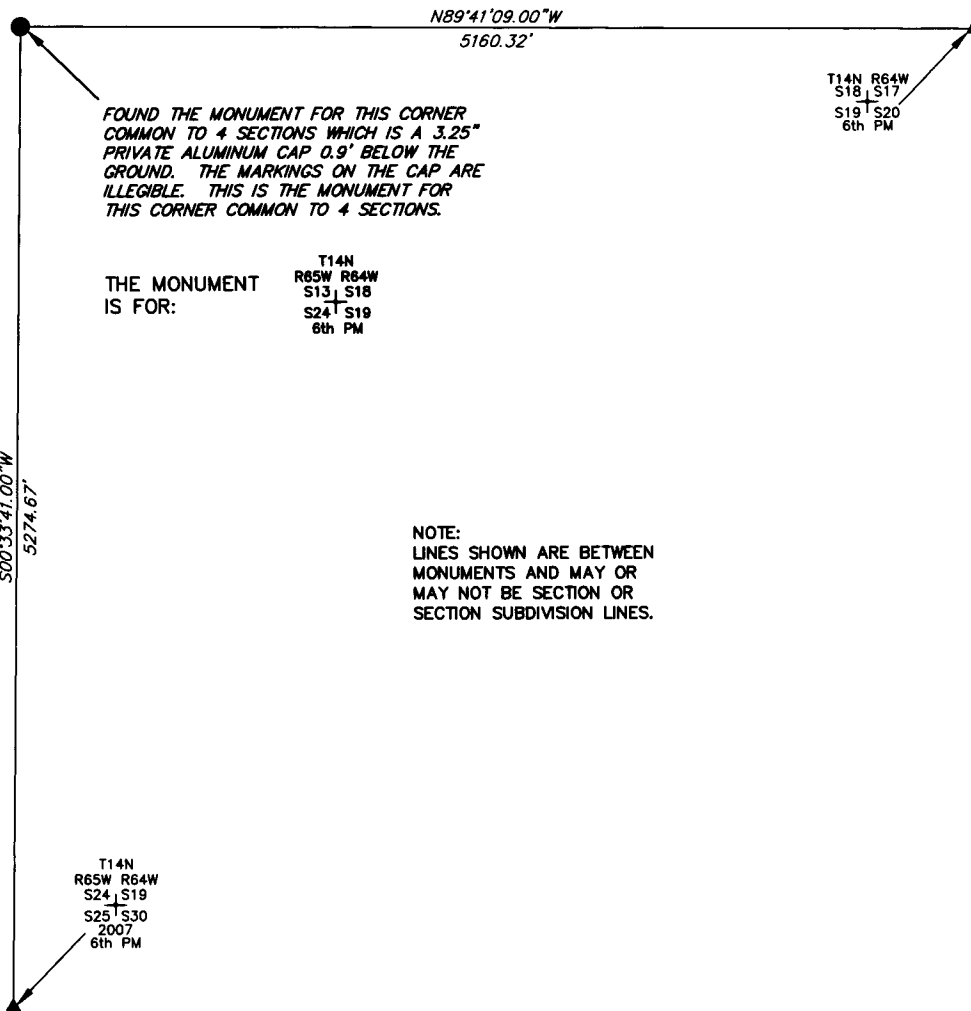
# State of Wyoming Corner Record

*CORNER PERPETUATION AND FILING ACT.*

Regulations of the Board of Registration for Professional Engineers and Land Surveyors.)

Reverse side of this form may be used if more space is needed.

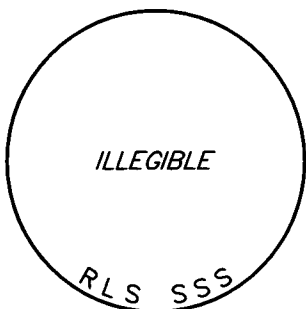
Record of original survey and citation of source of historic information (if corner is lost or obliterated). Description of corner monumentation evidence found and/or monument and accessories established to perpetuate the location of this corner. Sketch of relative location of monument, accessories, and reference points with course and distance to adjacent corner(s) (if determined in this survey). Method and rationale for reestablishment of lost or obliterated corner.



FOUND THE MONUMENT FOR THIS CORNER COMMON TO 4 SECTIONS WHICH IS A 3.25\" PRIVATE ALUMINUM CAP 0.9' BELOW THE GROUND. THE MARKINGS ON THE CAP ARE ILLEGIBLE. THIS IS THE MONUMENT FOR THIS CORNER COMMON TO 4 SECTIONS.

THE MONUMENT IS FOR:  
 T14N R65W R64W S13 S18 S24 S19 S25 S30 2007 6th PM

NOTE:  
 LINES SHOWN ARE BETWEEN MONUMENTS AND MAY OR MAY NOT BE SECTION OR SECTION SUBDIVISION LINES.



THE MONUMENT IS MARKED

**CORNER MONUMENT SYMBOLS**

- RECORD IS FOR THIS CORNER MONUMENT.
- ▲ A RELATED CORNER OR WC MONUMENT.

SCALE 1"=1000'  
 (EXCEPT IN TRIVIAL CASES)  
 BEARINGS ARE RELATED TO WGS 84 WITH GPS OBSERVATIONS  
 DRAWN BY: SM  
 P.C. D. SHANKS  
 COUNTY: LARAMIE



RECP #: 658207  
 RECORDED 4/6/2015 AT 2:31 PM BK# 2437 PG# 926  
 Debra K. Lathrop. CLERK OF LARAMIE COUNTY. WY PAGE 1 OF 1

Date of Field Work: 11/01/2013 Office Reference:

**CROSS INDEX DIAGRAM**

A	1	2	3	4	5	6	7	8	9	10	11	12	13	14	15	16	17	18	19	20	21	22	23	24	25
B																									
C		6			5				4					3					2						
D																									
E																									
F																									
G			7			8			9				10					11							12
H																									
J																									
K																									
L																									
M																									
N																									
O																									
P																									
Q																									
R																									
S																									
T																									
U																									
V																									
W																									
X																									
Y																									
Z																									
	1	2	3	4	5	6	7	8	9	10	11	12	13	14	15	16	17	18	19	20	21	22	23	24	25

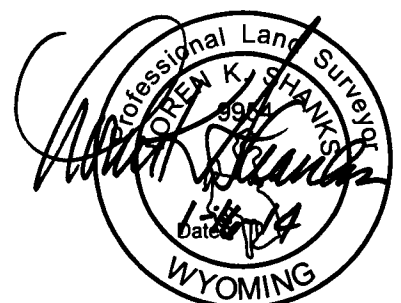
Firm/Agency, Address

UELS, LLC  
 85 South 200 East  
 Vernal, Utah 84078

Telephone Number: 435-789-1017

This corner record was prepared by me or under my direction and supervision.

SEAL & SIGNATURE



CORNER COMMON TO 4 SECTIONS  
 Corner Name: NORTHWEST CORNER OF SECTION 19 Section: 19 T 14N R 64W ; 6TH P.M. Cross Index No.: N-1  
 SBRPEPLS/PLSW: March 1994 (CLCR...SJA)